

DIVERSITY FORUM

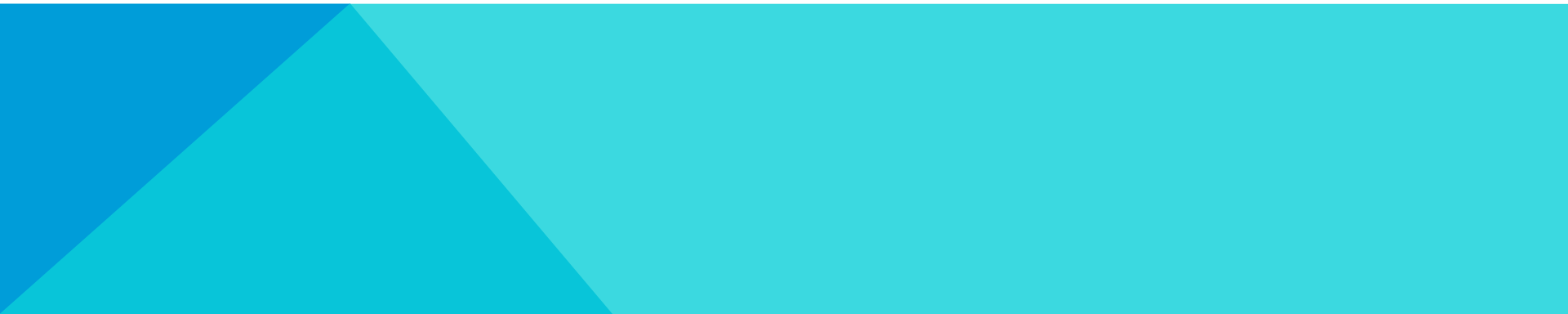
SPONSORED BY THE YWCA OF GREATER HARRISBURG

MISSION

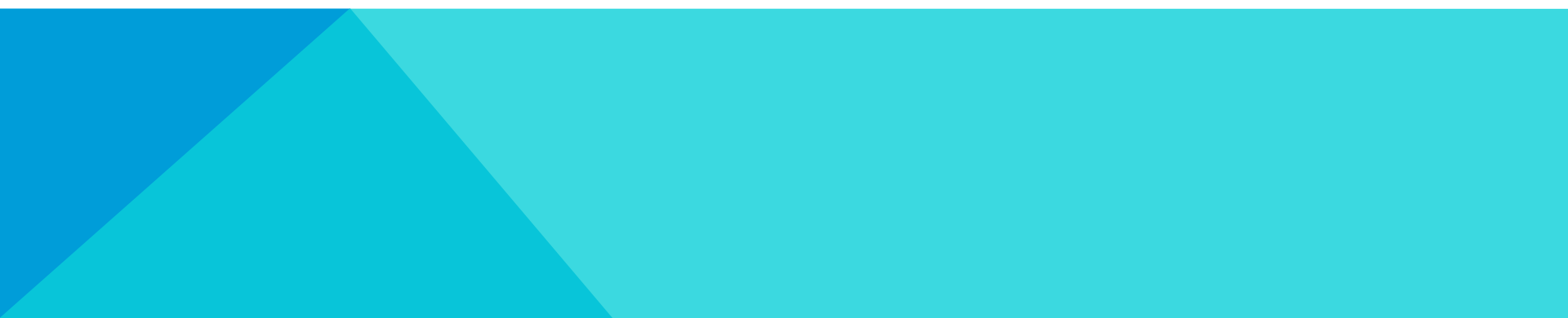
***TO FOSTER INCLUSIVE, ACTION-ORIENTED
COMMUNITIES THROUGH EDUCATIONAL FORUMS
THAT PROMOTE AND FACILITATE DIALOGUE,
BEST PRACTICES AND SOLUTIONS.***

VISION

EQUALITY AND EQUITY FOR ALL.



GUIDELINES FOR A “SAFE” & “BRAVE” SPACE

- 1. RESPECT DIFFERENT POINTS OF VIEW.**
 - 2. SPEAK FOR YOURSELF, NOT ANYONE ELSE.**
 - 3. ALLOW EVERYONE A CHANCE TO SHARE.**
 - 4. STICK TO THE ISSUE AND DON'T MAKE PERSONAL ATTACKS.**
 - 5. WHEN SOMEONE HURTS OR OFFENDS YOU, SAY “OUCH!”**
- 

HOME IS THE BARREL OF THE GUN



0:01 / 2:51



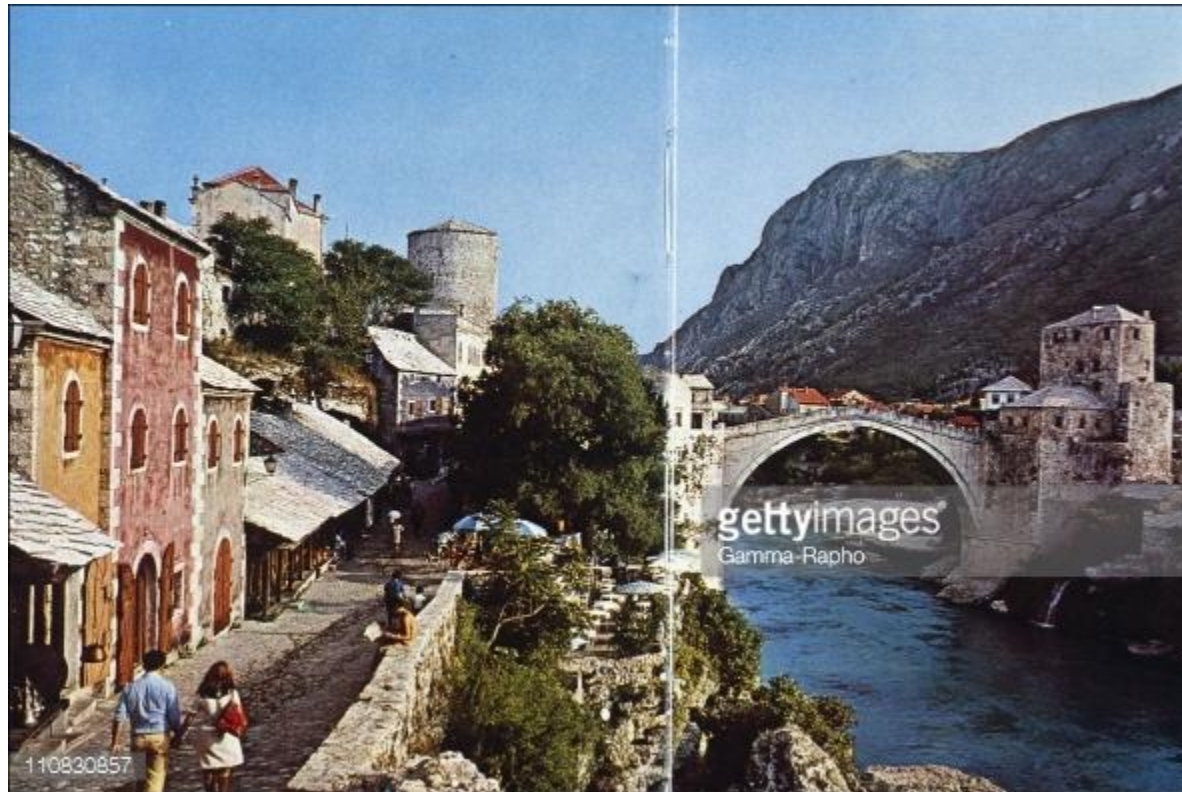
HD



MERSIDA CAMDZIC

MERSIDA'S MARKET, CARLISLE

BEFORE WAR



WAR

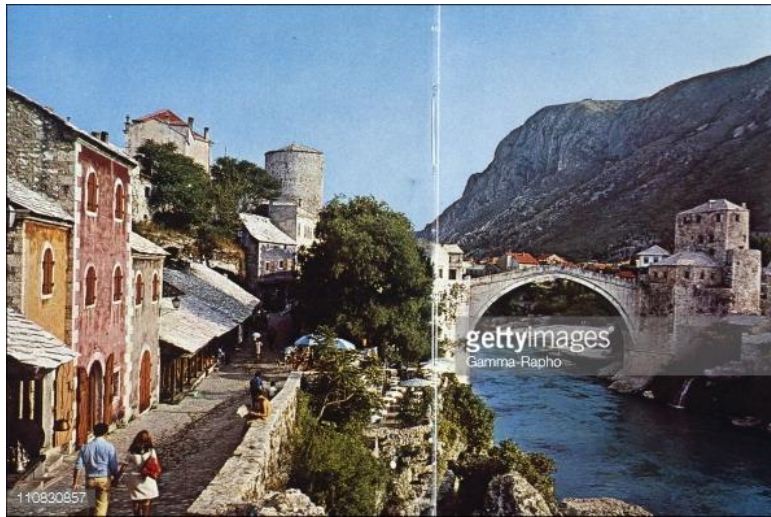


WAR



WAR & CONCENTRATION CAMP





OPENING MERSIDA' S MARKET HAPPY FAMILY NOW



PROUD TO BE AMERICAN CITIZEN
THANK YOU





pennsylvania

DEPARTMENT OF HUMAN SERVICES

REFUGEE RESETTLEMENT IN PENNSYLVANIA

Answering the humanitarian call in
the Commonwealth



OVERVIEW

- ✖ What is a refugee?
- ✖ How is a refugee resettled in the US?
- ✖ PA Refugee data and statistics
- ✖ What are we doing for refugees in Pennsylvania?

WHAT IS A REFUGEE?



A refugee is any person who is outside the country of such person's nationality or, in the case of a person having no nationality, is outside the country in which such person last habitually resided, and who is unable or unwilling to return to, and is unable or unwilling to avail himself or herself to the protection of that country because of persecution or a well - founded fear of persecution for reasons of race, religion, nationality, membership of a particular social group, or political opinion.

WHAT ARE THE DIFFERENCES BETWEEN REFUGEES, ASYLEES, AND IMMIGRANTS?

Refugee	Asylee	Immigrant
<p>A refugee receives permission to enter the United States from outside of the country.</p> <p>Refugees are resettled via refugee resettlement agencies in conjunction with the US Department of State, Federal Bureau of Investigation, US Department of Homeland Security, US Bureau of Population, Refugees, and Migration, with full knowledge of the receiving state.</p>	<p>An asylum seeker is already in the United States for whatever reason; a student visa, visitor visa, spouse/fiancé(e) visa, or an out of status alien.</p> <p>Once in the US, they must apply for asylum and prove there is a legitimate reason of fear for persecution should they attempt to return to their country of origin.</p>	<p>An immigrant is someone from a foreign country who relocates to live in another country.</p> <p>Reasons for immigration may include work opportunities, family ties, education, or lottery process.</p> <p>Immigration is considered a natural phenomenon in population ecology whereas refugee and asylee movements occur under some sort of coercion or pressure.</p>

HOW LONG HAS THE UNITED STATES (AND PENNSYLVANIA) BEEN RESETTLING REFUGEES?

Since 1975, the US has resettled more than 3 million refugees. Most refugees come from Vietnam or the former Soviet Union, although more than 70 nationalities are represented. Since the enactment of the Refugee Act of 1980, annual admission figures have ranged from a high of 207,116 in 1980 to a low of 27,100 the year following September 11, 2001.

WHO IS ELIGIBLE TO BE A REFUGEE IN THE UNITED STATES?

The United Nations High Commission for Refugees (UNHCR) has the international mandate to provide refugee assistance and to determine if resettlement in a third country - be it the United States or another country - is the right solution.



FACT



According to UNHCR, less than 1% of worldwide refugees are ever resettled in a third country.

UNHCR is mandated by its Statute and the UN General Assembly Resolutions to undertake resettlement as one of three durable solutions.

These durable solutions to rebuild refugee lives are:

- Repatriation – UNHCR works with country of origin to help refugees return home.
- Local Integration – Integration of refugees in the host community allows recipients to live in dignity and peace.
- Resettlement – Last resort, for those who cannot go home or be locally integrated, made possible by UNHCR and governments.

REFUGEE CAMPS



Camps with over one hundred thousand people are common, but as of 2012, the average-sized refugee camp housed around 11,400.

Some refugee camps exist for decades, and some grow into permanent settlements and even merge with nearby, older communities.

Some of our refugees resettled in Pennsylvania spent over 20 years in refugee camps (specifically Bhutanese/Nepali/Somali).

IN ORDER TO BE RESETTLED IN THE UNITED STATES...

You must receive a referral to the US Refugee Admissions Program (USRAP) for consideration as a refugee. Cases are processed in order of priority:

- **Priority 1:** Cases that are identified and referred to the program by the United Nations High Commissioner for Refugees (UNHCR), a United States Embassy, or a designated non-governmental organization (NGO).
- **Priority 2:** Groups of special humanitarian concern identified by the U.S. refugee program.
- **Priority 3:** Family reunification cases (spouses, unmarried children under 21, and parents of persons lawfully admitted to the United States as refugees or asylees or permanent residents (green card holders) or U.S. citizens who previously had refugee or asylum status).

ARE REFUGEES A SECURITY RISK?

In theory, terrorists could pose as refugees and enter other countries claiming asylum, however there is a thorough vetting process in place before a refugee can ever set foot in the United States.

A refugee that meets criteria for resettlement into the US is referred to the US Embassy and/or government contracted Resettlement Support Center (RSC) by the United Nations High Commission for Refugees (UNHCR).

The RSC compiles each refugee's personal data and background information for security clearance process and presents the findings to the US Department of Homeland Security (DHS) for an in-person interview. With the collected information a number of security checks are conducted. The State Department runs the names of all refugees referred to the US for resettlement through a standard Consular Lookout and Support System (CLASS) name check. Enhanced interagency security checks were phased into effect beginning 2008 and applied to all refugee applications starting in 2010.

Certain refugees from high-risk areas undergo additional security review called Security Advisory Opinion (SAO). These cases require a positive SAO clearance from a number of US law enforcement and intelligence agencies in order to continue with the resettlement process. Refugees are biometrically scanned (photographed and fingerprinted) by US government employees. Fingerprints are checked against various US government databases and information on potential matches is reviewed by DHS.



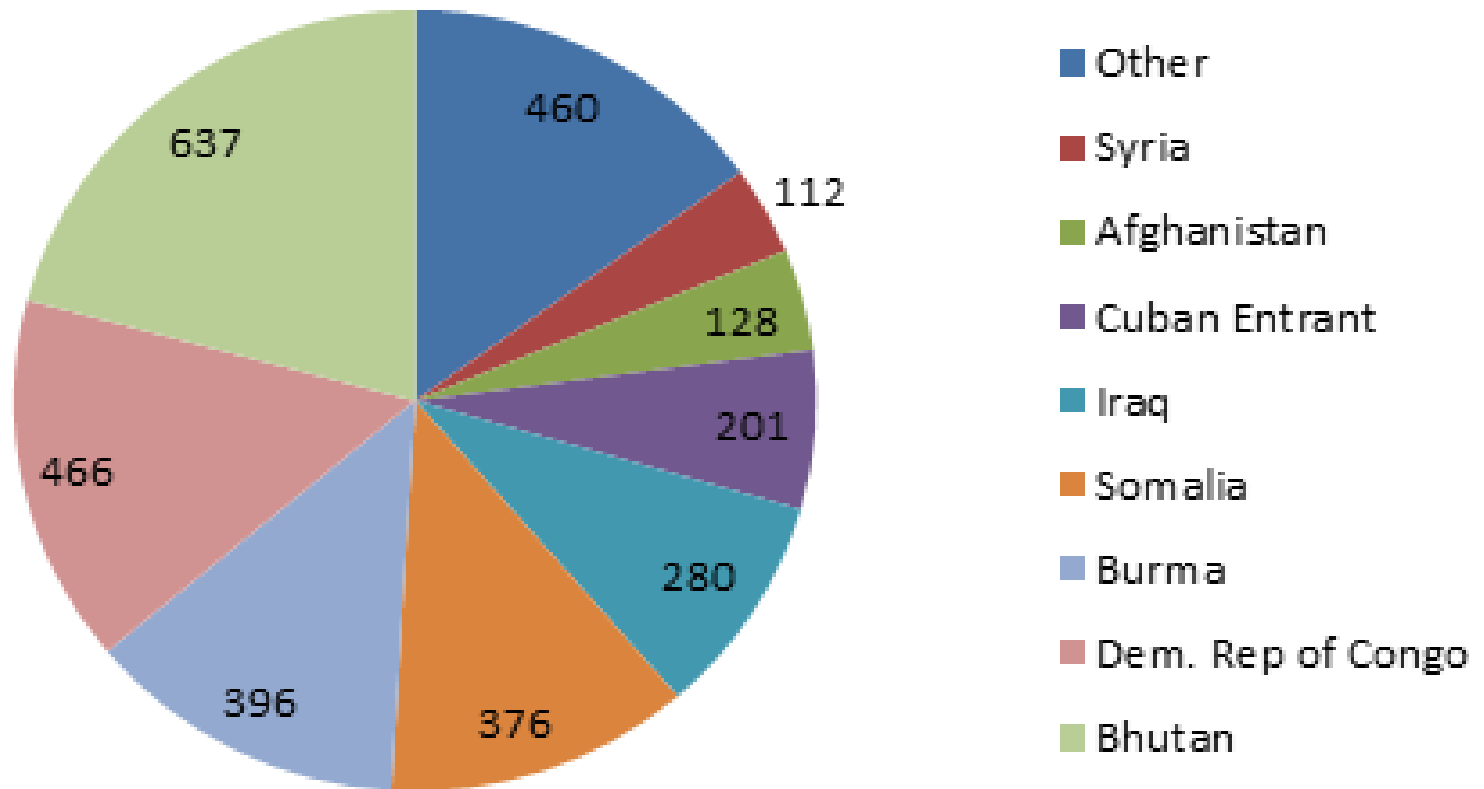
All refugee applicants are interviewed face-to-face by an officer from DHS US Citizenship and Immigration Services (USCIS). Based on the information in the refugee's case file and interview, the DHS officer determines whether the individual qualifies as a refugee and is admissible under US law. If the USCIS officer finds that the individual qualifies as a refugee and meets all US admission criteria, the officer conditionally approves the refugee's application for resettlement and submits it to US Department of State for final processing.

Conditional approvals become final once the result of all security checks have been received, analyzed, and cleared. Once refugees arrive in the US, at one of the US airports, they are inspected again by Customs and Border Protection (CBP). The CBP officer reviews the refugee's documentation and conduct additional security checks to ensure that the arriving refugee is the same person who was screened and approved for admission into the US.

FREEDOM



FOR FEDERAL FISCAL YEAR 2014-15 3,056 REFUGEES WERE RESETTLED IN PENNSYLVANIA



In Federal Fiscal Year 2015-16, **717** refugees have been resettled in the Commonwealth.

	REGION 1 Pittsburgh Area	REGION 2 Harrisburg/Lancaster Area	REGION 3 Philadelphia Area	REGION 4 Allentown/Scranton Area	REGION 5 Erie Area	
OCT 15	43	72	66	17	77	275
NOV 15	28	58	51	24	33	194
DEC 15	47	69	64	23	45	248

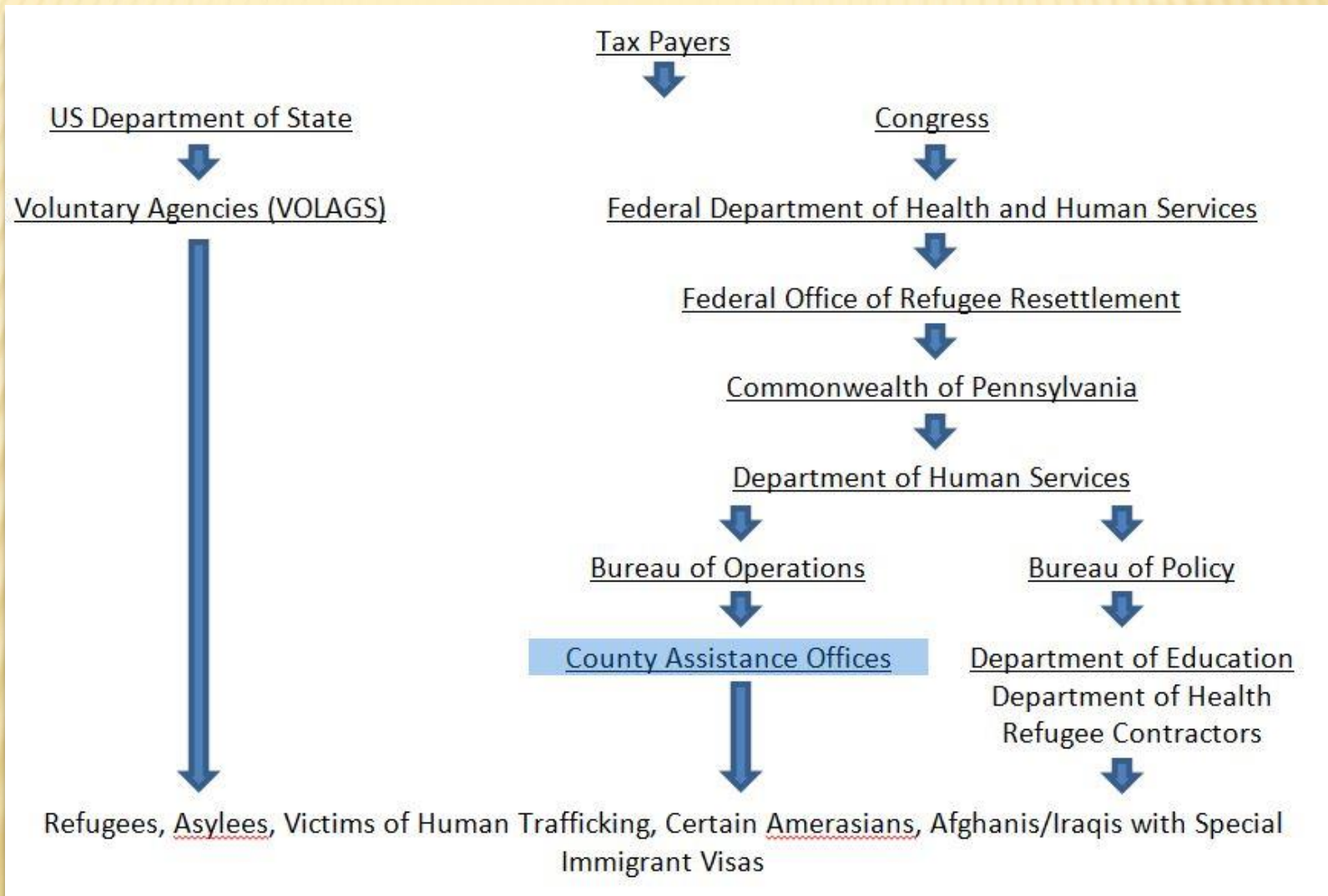
PENNSYLVANIA TOTALS BY COUNTRY 2015-2016																
		OCT	NOV	DEC	JAN	FEB	MAR	APR	MAY	JUN	JUL	AUG	SEP	TOTAL		
AFGHANISTAN	AF	31	12	28	0	0	0	0	0	0	0	0	0	71	AFGHANISTAN	
BELARUS	BO	0	5	0	0	0	0	0	0	0	0	0	0	5	BELARUS	
BURMA	BM	11	12	8	0	0	0	0	0	0	0	0	0	31	BURMA	
BHUTAN	BT	41	23	40	0	0	0	0	0	0	0	0	0	104	BHUTAN	
BURUNDI	BY	4	0	5	0	0	0	0	0	0	0	0	0	9	BURUNDI	
CHINA	CH	2	0	3	0	0	0	0	0	0	0	0	0	5	CHINA	
DEM REP OF CONGO	CG	62	32	47	0	0	0	0	0	0	0	0	0	141	DEM REP OF CONGO	
CONGO	CF	0	0	1	0	0	0	0	0	0	0	0	0	1	CONGO	
CUBAN ENTRANT	CUE	27	19	18	0	0	0	0	0	0	0	0	0	64	CUBAN ENTRANT	
ERITREA	ER	2	0	11	0	0	0	0	0	0	0	0	0	13	ERITREA	
ETHIOPIA	ET	15	1	6	0	0	0	0	0	0	0	0	0	22	ETHIOPIA	
INDIA	IN	0	1	0	0	0	0	0	0	0	0	0	0	1	INDIA	
IRAN	IR	2	0	0	0	0	0	0	0	0	0	0	0	2	IRAN	
IRAQ	IZ	7	11	20	0	0	0	0	0	0	0	0	0	38	IRAQ	
KAZAKHSTAN	KZ	0	9	0	0	0	0	0	0	0	0	0	0	9	KAZAKHSTAN	
NEPAL	NP	2	1	3	0	0	0	0	0	0	0	0	0	6	NEPAL	
PAKISTAN	PK	0	0	2	0	0	0	0	0	0	0	0	0	2	PAKISTAN	
RUSSIA	RS	2	0	1	0	0	0	0	0	0	0	0	0	3	RUSSIA	
SOMALIA	SO	29	31	23	0	0	0	0	0	0	0	0	0	83	SOMALIA	
SRI LANKA	CE	2	0	0	0	0	0	0	0	0	0	0	0	2	SRI LANKA	
SUDAN	SU	3	1	0	0	0	0	0	0	0	0	0	0	4	SUDAN	
SYRIA	SY	14	26	13	0	0	0	0	0	0	0	0	0	53	SYRIA	
TAJIKISTAN	TI	10	5	0	0	0	0	0	0	0	0	0	0	15	TAJIKISTAN	
UKRAINE	UP	9	5	19	0	0	0	0	0	0	0	0	0	33	UKRAINE	
GRAND TOTAL		275	194	248	0	0	0	0	0	0	0	0	0	717	GRAND TOTAL	

PA REFUGEE RESETTLEMENT PROGRAM

Funded by the US Department of Health and Human Services, Administration for Children and Families, Office of Refugee Resettlement (ORR), the Pennsylvania Refugee Resettlement Program provides a continuum of employment, educational, case management, health and financial support services to newly arrived refugees in the Commonwealth.

Responsibility for the Refugee Resettlement Program rests with the State Refugee Coordinator, designated by the Secretary of Welfare. The Program is overseen by the PA Department of Human Services. Cash and Medical Assistance programs, administered by the Office of Income Maintenance, are coordinated with the delivery of employment, educational, aging and allied human services, administered by the Bureau of Employment and Training in the Office of Income Maintenance.

Where does the money come from?



WHAT ARE WE DOING FOR REFUGEES IN PENNSYLVANIA?



The PA Refugee Resettlement Program (RRP) offers a wide range of programs aimed at promoting family self-sufficiency, greater access to mainstream services, and fuller participation in local community life.

All RRP services are federally funded. Eligibility requirements vary according to controlling regulations for specific programs.

EMPLOYMENT SERVICES

The RRP offers a broad range of employability services intended to promote rapid employment, job retention, skills development, and advancement.

- ✖ job development;
- ✖ employment counseling;
- ✖ employment-based, family-oriented case management and support services
- ✖ job search training;
- ✖ résumé preparation;
- ✖ translation of credentials;
- ✖ placement services;
- ✖ job coaching;
- ✖ technical assistance to employers; and
- ✖ follow-up support.



ENGLISH LANGUAGE TRAINING (ELT) SERVICES



English Language Training (ELT) services include:

- ✖ English as a Second Language (ESL) classes;
- ✖ Individual ESL tutoring and worksite vocational ESL training.

TARGETED ASSISTANCE



- ✘ The Federal Government periodically assesses the impact of refugee resettlement upon individual counties across the country, and provides additional targeted funding for enhanced services.
- ✘ In Pennsylvania, Philadelphia and Lancaster Counties receive Targeted Assistance Formula (TAP) dollars to provide employment services. The Philadelphia programs are administered by the Nationalities Service Center and Jewish Employment and Vocational Services (JEVS). The Lancaster County programs are managed by Lutheran Children and Family Service and Church World Service. Eligibility for TAP is limited to refugees residing within the counties. Services are centered on finding employment for eligible refugees and in addition to providing job placement, offer case management for harder-to-place clients. TAP also assists refugee clients who receive TANF benefits to meet their required number of weekly employment participation hours.
- ✘ Targeted Assistance Discretionary (TAG) funds have been granted to service providers in other areas of the state to offer similar programs. In Harrisburg, Catholic Charities enrolls refugees into the GAIN employment program. In Western PA, the Multicultural Community Resource Center in Erie and Catholic Charities of Pittsburgh offer skills training and employment-based case management respectively.

OLDER REFUGEES

Under a grant from the federal Office of Refugee Resettlement, the RRP offers:

- ✘ Outreach/referral services to refugees over 60 years of age residing in and near Philadelphia county to assist with connection to mainstream benefits
- ✘ Citizenship preparation

In Pennsylvania, these services are provided by MCRC in Erie and HIAS in Philadelphia.



CITIZENSHIP PREPARATION

Pursuant to Federal Regulations issued March 22, 2000, amending 45 CFR Parts 400 and 401, the RRP is now contracting with qualified organizations for the provision of citizenship preparation services for refugees. These services include:

- ✘ Naturalization examination preparation in history, civics and English;
- ✘ Naturalization examination interviewing skills; and
- ✘ Legal assistance in counseling, preparation of applications and representation before USCIS.



UNACCOMPANIED REFUGEE MINORS PROGRAM

The RRP provides a full spectrum of foster care and semi-independent living arrangements for refugee minors under the Unaccompanied Refugee Minors (URM) Program. All unaccompanied refugee minors in the Commonwealth are resettled and served in the Philadelphia region by Lutheran Children and Family Service of Eastern Pennsylvania.



REFUGEE SCHOOL IMPACT GRANT (RSIG)



RRP in conjunction with the Pennsylvania Department of Education (PDE), with money from the Office of Refugee Resettlement (ORR), offers sub-grants to participating school districts, intermediate units, and non-profit organizations who serve school age refugee children throughout the state.

Programs funded by RSIG engage community members in opportunities for education, integration, wellness, and work leading to self-sufficiency and enriched lives for the entire community.

Grantees offering quality and meaningful programs to refugee students and family in Pennsylvania are Erie School District, Lancaster City School District, Central Susquehanna Intermediate Unit 16, Lancaster/Lebanon Intermediate Unit 13, Lincoln Intermediate Unit 12, and Hebrew Immigration Aid Society of Pennsylvania (HIAS PA).

THANK YOU TO OUR EXCELLENT PROVIDERS

Northern Area Multi Service
Center of Pittsburgh

AJAPO of Pittsburgh

Jewish Family & Children
Services of Pittsburgh

Church World Service of
Lancaster

International Service Center
of Harrisburg

Catholic Charities of
Harrisburg

Lutheran Children & Family
Services of Lancaster

HIAS and Council of
Philadelphia

Lutheran Children &
Family Services of
Philadelphia

JEVS of Philadelphia

New World of Philadelphia

SEAMAAC of Philadelphia

Nationalities Service
Center of Philadelphia

Lutheran Children and
Family Services of
Allentown

Catholic Social Services
of Scranton

Multicultural
Community Resource
Center of Erie

International Institute of
Erie

St. Benedicts of Erie

Catholic Charities of
Erie

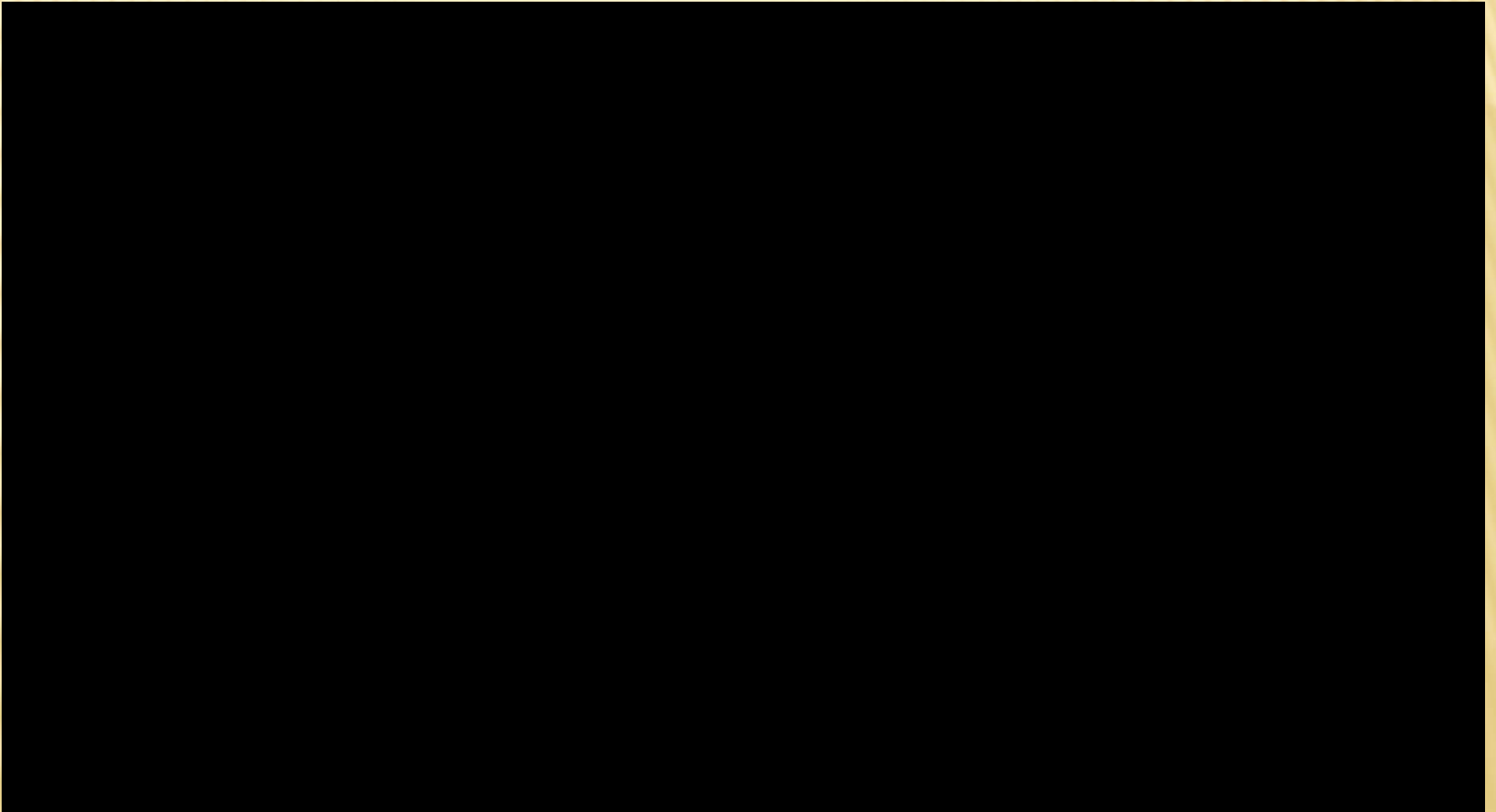


VISIT OUR WEBSITE!



www.refugeesinpa.org

LOOK INTO MY EYES



Video courtesy of Kirstin Rehder in association with Amer Alfayadh, case manager at Church World Service in Lancaster. Featuring refugees in Lancaster, PA.

ABHI NEUPANE

BHUTANESE COMMUNITY IN HARRISBURG

REFUGEE RESETTLEMENT

CREATING WELCOMING COMMUNITIES


PRESENTED BY CATHOLIC CHARITIES
Sara Beck, ESL Services

ARRIVAL IN THE UNITED STATES

What do resettlement agencies do?



RESETTLEMENT VOLUNTARY AGENCIES

- United States Conference of Catholic Bishops (USCCB)
 - Church World Services (CWS)
 - Ethiopian Community Development Council (ECDC)
 - Episcopal Migration Ministries (EMM)
 - Hebrew Immigrant Aid Society (HIAS)
 - International Rescue Committee (IRC)
 - Lutheran Immigration and Refugee Services (LIRS)
 - US Committee for Refugees and Immigrants (USCRI)
 - World Relief Corporation (WRC)
- 

RESPONSIBILITIES

RESETTLEMENT AGENCIES PROVIDE . . .

1. Airport pick-up
2. A well furnished apartment to accommodate the entire family
3. Provide clients pocket money and assist with initial needs such as applying for a Social Security Number, public assistance enrollment, public school registration, and medical evaluation
4. Assist clients in the search for family sustaining employment, through the resettlement program or through referrals for employment services.
5. Assist in finding client supplemental services as needed, such as English as a Second Language instruction and mental health counseling. In addition, cultural orientation, job search skills, use of public transportation, and mentoring are services provided by resettlement agencies.
6. Services continue for 3 to 6 months. After 1 year, agencies must assist clients with Green Card application. Emergency services are provided as necessary.

ARRIVALS AND COUNTRY OF ORIGIN

- 3056 refugees were resettled in PA in the 14/15 PY.
- PA is divided into 5 resettlement regions. Region 2 consists of the Harrisburg/Lancaster areas.
- 911 refugees were resettled in Region 2 during the 14/15 PY, making our region the largest resettlement region in the state.
- 253 refugees from 12 different countries were resettled by Catholic Charities during this period. (see chart for breakdown)
- Of the 253, 238 were placed in Harrisburg. The remaining 15 clients went to Mechanicsburg, Carlisle, Middletown, Hummelstown, and State College.

Catholic Charities Arrivals 14/15

Afghanistan	5
Bhutan	162
Burma	7
DRC	8
Eritrea	2
Iraq	21
Nepal	5
Pakistan	5
Rwanda	7
Somalia	20
Syria	6
Ukraine	5

WORKING TOGETHER

How can you help a refugee family?

#1 Be a Friend

#2 Become a Volunteer

#3 Help to locate good, clean, affordable housing in safe neighborhoods for new arrivals

#4 Collect furniture, household items, or personal items for a new family

#5 Have a car or truck? Help with transportation of furniture and household items or help transport refugees to medical appointments or English Classes

#6 Become an advocate. Share your knowledge with others!

#7 You tell us! How do you think you can best utilize your time and talents to support your refugee neighbors?

THANK YOU!

Sara Beck, ESL Services Manager
Catholic Charities, Immigration and Refugee Services
939 East Park Drive, Suite 102
Harrisburg, PA 17111

(717) 232-0568

shbeck@cchbg.org

**Thank
You**

